



# Hunter Valley Wyandotte Club

## Present their **38th Annual Show**

At Maitland Showground

Saturday 16th &  
Sunday 17<sup>th</sup> July 2022

### **JUDGES:**

**Large Fowl – John Watson (Tas)**

**Bantam – Brian Bennett (Tas)**

**(Judges could be substituted or changed around at the discretion of the Committee)**

Entries: \$1.50 Members, \$2.00 Non Members

Juniors: Members 50c, Non Members \$1.00

\*Exhibitors Note\*

\*Enter 20 and show as many as you like at no extra cost\*

**Entries Close Friday 8<sup>th</sup> July 2022**

**ENSURE YOU ALLOW PLENTY OF TIME IF YOU POST YOUR ENTRIES AS AUSTRALIA POST IS SLOW**

With the Show Secretary, Amanda Winney

3 First Avenue,

Rutherford 2320

**Ph: 0422237277**

Email: [hunintervalleywyandotteclub@gmail.com](mailto:hunintervalleywyandotteclub@gmail.com)

### **Direct Deposit for entries is accepted**

Bank: Greater Bank

BSB: 637000

ACCOUNT: 780309784

**PLEASE PUT SURNAME AS DESCRIPTION SO THE PAYMENT CAN BE TRACED**

Birds may be penned on Friday from 4:30pm – 7pm (Shed will be closed strictly at 7pm)

Birds to be penned between 7:30am – 8:45am, Saturday

**Official Show Opening at 9am**

**Judging will commence at 9:15am SHARP**

A selection of birds in the show will be offered for auction  
See inside schedule for full details.

**PLEASE READ THROUGH DETAILS IN REGARDS TO OTHER EVENTS AT THE  
GROUNDS DURING OUR SHOW WEEKEND**

**Dinner this year will be held at 7pm, a booking will be made for tables but each person can order their own dinner to their tastes. Join us for an enjoyable evening of socialising and laughter, something that we haven't been able to do for the past 2 years.**

## **Conditions of Entry at this year's show**

We will be following any relevant government requirements if they arise prior to our show.

- Hand sanitiser will be provided throughout the pavilion for your use.
- 1.5 metre distance between all exhibitors and visitors.
- Due to COVID we will require every exhibitor to clean out their own pens with equipment provided.
- If you have been around someone who has tested positive for covid-19 or if you are feeling unwell (flu like symptoms) we ask that you refrain from attending our show to help protect our fellow exhibitors.

Limited canteen facilities will be available on the day.

## CHANGES TO PARKING AND GROUNDS ACCESS DUE TO ANOTHER EVENT

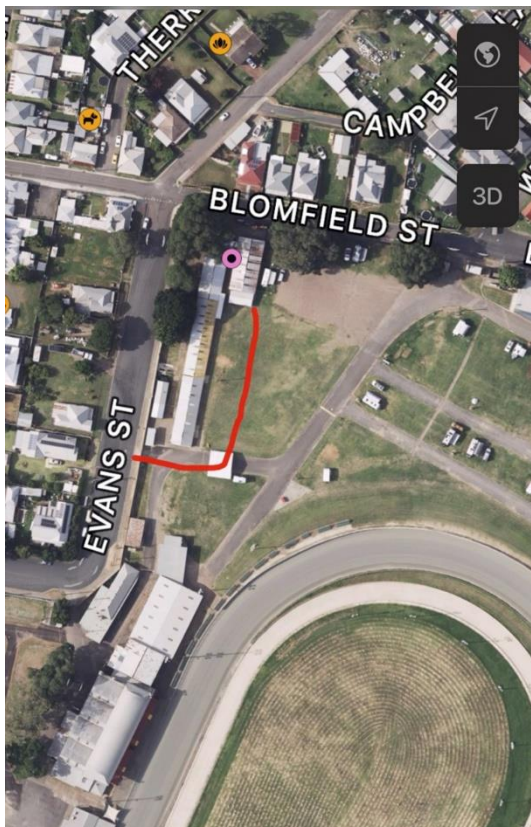
Due to Hunter Events Bar & BBQ Festival being held on the grounds on the same weekend the access to the grounds will be slightly changed this year. Entry will be via Evans St gate (behind poultry pavilion) and limited parking space will be provided to our event so we ask that exhibitors drive onto the grounds unload their birds and then move their vehicles out and park on Evans St. Access to the remainder of the showground will only be via paid tickets as the other event is ticketed.

Please refer to the map to show gate location and entry point to the poultry pavilion.

Directions Turn off the New England Highway onto Louth Park Rd (United Service Station), turn left onto Blomfield Street then turn right onto Evans St, gateway is halfway down the street, parking is anywhere along Evans Street.

If you would like to have a look around the Bar & BBQ Festival tickets can be purchased at [Hunter Events Bar and BBQ Festival \(huntereventsbbf.com.au\)](http://huntereventsbbf.com.au)

<http://huntereventsbbf.com.au/tickets.php> If you purchase tickets before 30/6/2022 you can use your dine and discovery vouchers to save on the ticket price.



# Trophy, Sashes and Awards for Competition

## **Perpetual Trophies (ALL PERPETUAL TROPHY WINNERS WILL RECEIVE A COMMEMORATIVE MUG)**

Graham Marks Perpetual Trophy. Hunter Valley & Central West Shows. Most successful exhibitor of Silver Pencilled Wyandottes. Exhibitors must show at both shows to be eligible for the Trophy. This is decided on a point score system over both shows. (Donated by Peter Charlton)

Wal Smart Memorial Shield. For Champion Gold Laced Bantam. Donated by M & K Vizer

The Leo Walsh Memorial Trophy. For overall Champion from the Columbian, Black & Cuckoo Bantam classes. Donated by the late Wilf Wingett

Cec Pullen Memorial Trophy. For Champion Bantam

Wyandotte Club of Australia Perpetual Trophy. For Champion Bird of Show

The Betty Passfield Memorial Trophy. For Champion Breeding Pair in Show

Duane Rhall Perpetual Trophy. For Champion White Bantam

The Anderson Family Perpetual Trophy. For Champion Columbian Bantam

Lionel McCaskell Perpetual Shield. For Champion Laced Bantam Overall

Tom Bleasdale Memorial Trophy. For Champion Standard Silver Laced Male Donated by The Bleasdale Family

## **Special Awards.**

**Champion Bird of Show** - Trophy and Sash and Perpetual Trophy

**Reserve Champion Bird of Show** –Trophy and Sash

**Champion Large**- Trophy & Sash. Award

**Reserve Champion Large** – Trophy & Sash

**Champion Bantam**- Trophy, Sash & the Cec Pullen Memorial Trophy

**Reserve Champion Bantam** – Trophy & Sash

Champion Rare Colour Large Male– Sash

Champion Rare Colour Large Female– Sash

Champion Rare Colour Bantam Male – Sash

Champion Rare Colour Bantam Female – Sash

**\*\*Colours to qualify for rare colour sashes. Large Barred/Cuckoo, Black, Blue, Blue Laced Gold, Buff, Buff Columbian, Buff Laced, Crele, Partridge, Red, Silver Pencilled, and entries that qualify for AORC.**

**Bantam:** Black, Blue, Laced Blue, Cuckoo, Crele, Barred, Buff Columbian, Red, Blue Laced Gold, Buff Laced, and entries that qualify for AORC.

Champion Breeding Pair in Show (Large/Bantam)- Betty Passfield Memorial - Commemorative Mug & Sash

Champion Breeding Pair Large – Sash

Champion Breeding Pair Bantam – Sash

Champion Junior Exhibit Large – Trophy & Sash

Champion Junior Exhibit Bantam – Trophy & Sash

Champion Cockerel Breeding Female Large – Sash& Trophy

Champion Pullet Breeding Male Large– Sash& Trophy

Champion Cockerel Breeding Female Bantam – Sash & Trophy

Champion Pullet Breeding Male Bantam – Sash & Trophy

## **LARGE**

**Group A** - Champion White – Trophy & Sash

**Group B** - Trophy for Champion of Group

Champion Silver Laced – Trophy & Sash

Best Opposite Sex Silver Laced – Sash

Champion Gold Laced – Trophy & Sash

Champion Blue Laced Gold – Trophy & Sash

Champion Buff Laced – Trophy & Sash

Champion A.O.R.C Laced – Trophy & Sash

**Group C** – Trophy for Champion of Group

Champion Silver Pencilled – Trophy & Sash

Champion Columbian – Trophy & Sash

Champion Buff – Trophy & Sash

Champion Red – Trophy & Sash

Champion Black – Trophy & Sash

Champion Barred/Cuckoo – Trophy & Sash

Champion Partridge – Trophy & Sash

Champion Buff Columbian – Trophy & Sash

Champion Blue – Trophy & Sash

Champion A.O.R.C – Trophy & Sash

**\*New Recognised Colours as per WCA Standards\***

Champion Red Partridge - Trophy & Rosette

Champion Blue Partridge - Trophy & Rosette

Champion Blue Marked Columbian - Trophy & Rosette

Champion Blue Laced Red - Trophy & Rosette

## **BANTAM**

**Group A** – Trophy for Champion of Group

Champion White – Trophy & Sash (Perpetual Trophy donated by Duane Rhall)

Champion White Opposite Sex – Trophy & Sash

Champion Columbian – Trophy & Sash (Perpetual Trophy donated by The Anderson Family)

**Group B** – Trophy for Champion of Group (Lionel McCaskill Perpetual Shield)

Champion Laced Opposite sex – Sash

Champion Silver Laced – Trophy & Sash

Champion Gold Laced – Trophy & Sash

Champion Buff Laced – Trophy & Sash

Champion Blue Laced Gold – Trophy & Sash

Champion AORC Laced – Trophy & Sash

**Group C** – Trophy for Champion of Group

Champion Silver Pencilled – Trophy & Sash

Champion Buff – Trophy & Sash

Champion Partridge – Trophy & Sash

Champion Black – Trophy & Sash

Champion Cuckoo – Trophy & Sash

Champion Crele – Trophy & Sash

Champion Buff Columbian – Trophy & Sash

Champion Red – Trophy & Sash

Champion Blue – Trophy & Sash

Champion Laced Blue – Trophy & Sash

Champion AORC – Trophy & Sash

**\*New Recognised Colours as per WCA Standards\***

Champion Red Partridge - Trophy & Rosette

Champion Blue Partridge - Trophy & Rosette

Champion Blue Marked Columbian - Trophy & Rosette

Champion Blue Laced Red - Trophy & Rosette

## Raffle: Table full of prizes donated by sponsors.

If you would like to purchase tickets and are unable to attend the show please contact the secretary for details.

## Auction

Sell your excess, quality birds at our Auction

### LARGE FOWL CLASSES

|                       | Cock | Hen | Cockerel | Pullet |
|-----------------------|------|-----|----------|--------|
| White                 | 1    | 2   | 3        | 4      |
| Silver Laced          | 5    | 6   | 7        | 8      |
| Gold Laced            | 9    | 10  | 11       | 12     |
| Buff Laced            | 13   | 14  | 15       | 16     |
| Blue Laced Gold       | 17   | 18  | 19       | 20     |
| A.O.R.C Laced         | 21   | 22  | 23       | 24     |
| Silver Pencilled      | 25   | 26  | 27       | 28     |
| Columbian             | 29   | 30  | 31       | 32     |
| Black                 | 33   | 34  | 35       | 36     |
| Blue                  | 37   | 38  | 39       | 40     |
| Buff                  | 41   | 42  | 43       | 44     |
| Buff Columbian        | 45   | 46  | 47       | 48     |
| Red                   | 49   | 50  | 51       | 52     |
| Partridge             | 53   | 54  | 55       | 56     |
| Cuckoo/Barred         | 57   | 58  | 59       | 60     |
| A.O.R.C               | 61   | 62  | 63       | 64     |
| Red Partridge         | 65   | 66  | 67       | 68     |
| Blue Partridge        | 69   | 70  | 71       | 72     |
| Blue Marked Columbian | 73   | 74  | 75       | 76     |
| Blue Laced Red        | 77   | 78  | 79       | 80     |

### LARGE FOWL BREEDING CLASSES

|                              | Cockerel Breeding Females  | Pullet Breeding Males |
|------------------------------|--|-----------------------|
| Partridge                    | CB1  | PB7                   |
| Silver Laced                 | CB2  | PB8                   |
| Gold Laced                   | CB3  | PB9                   |
| Silver Pencilled             | CB4  | PB10                  |
| Black                        | CB5  | PB11                  |
| A.O.R.C                      | CB6  | PB12                  |
|                              |  |                       |
| <b><u>BREEDING PAIRS</u></b> | <i>If 5 or more entries are exhibited in the A O R C class then another class will be added.</i> |                       |
| White                        | P1   |                       |
| Self Colours                 | P2   |                       |
| Laced                        | P3   |                       |
| Pencilled                    | P4   |                       |
| Any Colour Columbian         | P5   |                       |
| A O R C                      | P6   |                       |

| <b><u>Pair of Females</u></b> |     |  |
|-------------------------------|-----|--|
| White                         | PP1 |  |
| Self Colours                  | PP2 |  |
| Laced                         | PP3 |  |
| Pencilled                     | PP4 |  |
| Any Colour Columbian          | PP5 |  |
| A O R C                       | PP6 |  |

## **BANTAM CLASSES**

|                          | Cock | Hen | Cockerel | Pullet |
|--------------------------|------|-----|----------|--------|
| White                    | 81   | 82  | 83       | 84     |
| Columbian                | 85   | 86  | 87       | 88     |
| Silver Pencilled         | 89   | 90  | 91       | 92     |
| Black                    | 93   | 94  | 95       | 96     |
| Blue                     | 97   | 98  | 99       | 100    |
| Laced Blue               | 101  | 102 | 103      | 104    |
| Partridge                | 105  | 106 | 107      | 108    |
| Cuckoo                   | 109  | 110 | 111      | 112    |
| Buff                     | 113  | 114 | 115      | 116    |
| Crele                    | 117  | 118 | 119      | 120    |
| Buff Columbian           | 121  | 122 | 123      | 124    |
| Red                      | 125  | 126 | 127      | 128    |
| Self Red                 | 129  | 130 | 131      | 132    |
| Silver Laced             | 133  | 134 | 135      | 136    |
| Gold Laced               | 137  | 138 | 139      | 140    |
| Blue Laced Gold          | 141  | 142 | 143      | 144    |
| Buff Laced               | 145  | 146 | 147      | 148    |
| A.O.R.C Laced            | 149  | 150 | 151      | 152    |
| A.O.R.C                  | 153  | 154 | 155      | 156    |
| Blue Partridge           | 157  | 158 | 159      | 160    |
| Red Partridge            | 161  | 162 | 163      | 164    |
| Blue Marked<br>Columbian | 165  | 166 | 167      | 168    |
| Blue Laced Red           | 169  | 170 | 171      | 172    |

## **BANTAM BREEDING CLASSES**

|                              | Cockerel Breeding Females  | Pullet Breeding Males |
|------------------------------|--|-----------------------|
| Partridge                    | CB13   | PB19                  |
| Silver Laced                 | CB14   | PB20                  |
| Gold Laced                   | CB15   | PB21                  |
| Silver Pencilled             | CB16   | PB22                  |
| Black                        | CB17   | PB23                  |
| A.O.R.C                      | CB18   | PB24                  |
| <b><u>BREEDING PAIRS</u></b> | <i>If 5 or more entries are exhibited in the A O R C class then another class will be added.</i> |                       |
| White                        | P7   |                       |
| Self Colours                 | P8   |                       |

|                               |      |  |
|-------------------------------|------|--|
| Laced                         | P9   |  |
| Pencilled                     | P10  |  |
| Any Colour Columbian          | P11  |  |
| A O R C                       | P12  |  |
| <b><u>Pair of Females</u></b> |      |  |
| White                         | PP7  |  |
| Self Colours                  | PP8  |  |
| Laced                         | PP9  |  |
| Pencilled                     | PP10 |  |
| Any Colour Columbian          | PP11 |  |
| A O R C                       | PP12 |  |

## **JUNIOR CLASSES**

|                 | Large Male | Large Female | Bantam Male | Bantam Female |
|-----------------|------------|--------------|-------------|---------------|
| White           | 173        | 174          | 175         | 176           |
| Silver Laced    | 177        | 178          | 179         | 180           |
| Gold Laced      | 181        | 182          | 183         | 184           |
| A.R.C Columbian | 185        | 186          | 187         | 188           |
| Partridge       | 189        | 190          | 191         | 192           |
| Self Colours    | 193        | 194          | 195         | 196           |
| AORC            | 197        | 198          | 199         | 200           |

## **DEVELOPMENT CLASS**

| Class | Development Classes                        |
|-------|--|
| D1    | Standard Wyandotte (Please specify Colour) |
| D2    | Bantam Wyandotte (Please specify Colour)   |

Exhibitors are encouraged to enter a male and female of the variety and can be accompanied with photographic/written or other forms of evidence displayed in association with the birds.

**Entries in these classes must carry Wyandotte characteristics:**

- Typical Wyandotte shape and carriage
- Eyes: reddish bay
- Rosecomb, face, wattles and ear lobes: bright red.
- Shanks and toes: yellow

### **Conditions of Entry**

- The Hunter Valley Wyandotte Club is an affiliate of The Wyandotte Club of Australia. This show will be conducted under the rules adopted by the Wyandotte Club of Australia
- All care will be taken but no responsibility will be accepted for any loss incurred during the show
- All entries will be accepted subject to the approval of the committee
- The Club reserves the right to substitute a judge if deemed necessary
- The pavilion will be closed during the award presentation
- The pavilion will be closed and locked during the judging of the major awards.
- Unpenning will commence following the presentation on Saturday afternoon, exhibits will be unpenning with the assistance of a club member. This will be rigidly enforced
- Judging will be open but exhibitors are asked to keep a respectable distance from the judge's



- There are to be no leg bands or other identification on exhibits
- Water cups will be provided for every exhibit, any exhibitor using their own cups must remove them prior to judging commencing
- **A.O.R.C classes.** Will be defined by the colours set out in the APS 2<sup>nd</sup> edition, Wyandotte section. Development classes will be for unrecognised/experimental colours.
- Junior Exhibitors must be aged between 6 and 16, and pen their own birds.
- Juniors must be present at judging time to answer the judge's questions on their own birds.

# Hunter Valley Wyandotte Club's

## Annual Auction

### Guest Auctioneer: Mr Bert Hewitt from Gunnedah

- The Auction will commence at 10am Sunday 17<sup>th</sup> July 2022 in the bottom half of the poultry pavilion.
- All birds offered for The Auction must compete in the show
- The exhibitor must indicate on the entry form that they wish to enter the exhibit in the auction by placing an "X" beside the bird you wish to auction, in the column provided on your entry form.
- Auction Entries close with your entries on Friday the 8<sup>th</sup> July 2022
- A minimum starting bid will be set at \$40 per single bird and \$60 per pair.
- After Judging is complete on Saturday, all auction birds will be labelled for viewing prior to the Auction commencing.
- The Hunter Valley Wyandotte Club will take a commission of 20% from the sold price
- The Hunter Valley Wyandotte Club reserves the right to reject any lot they deemed unsuitable for auction.
- All lots are to be paid for in cash by the purchaser once the auction has finished.
- The seller will receive their money once all auction lots have been paid for by the bidders.
- A catalogue of birds entered for Auction will be available on the day.

**DUE TO LIMITED SEATING AVAILABLE PLEASE BRING A CHAIR TO  
SIT AND MINGLE**

# ENTRY FORM

## Secretary's Copy

| Class | Description | Pen No | Auction |
|-------|-------------|--------|---------|
|       |             |        |         |
|       |             |        |         |
|       |             |        |         |
|       |             |        |         |
|       |             |        |         |
|       |             |        |         |
|       |             |        |         |
|       |             |        |         |
|       |             |        |         |
|       |             |        |         |
|       |             |        |         |
|       |             |        |         |
|       |             |        |         |
|       |             |        |         |
|       |             |        |         |
|       |             |        |         |
|       |             |        |         |
|       |             |        |         |
|       |             |        |         |
|       |             |        |         |
|       |             |        |         |
|       |             |        |         |
|       |             |        |         |
|       |             |        |         |
|       |             |        |         |

## Exhibitors Copy

| Class | Description | Pen No | Auction |
|-------|-------------|--------|---------|
|       |             |        |         |
|       |             |        |         |
|       |             |        |         |
|       |             |        |         |
|       |             |        |         |
|       |             |        |         |
|       |             |        |         |
|       |             |        |         |
|       |             |        |         |
|       |             |        |         |
|       |             |        |         |
|       |             |        |         |
|       |             |        |         |
|       |             |        |         |
|       |             |        |         |
|       |             |        |         |
|       |             |        |         |
|       |             |        |         |
|       |             |        |         |
|       |             |        |         |
|       |             |        |         |
|       |             |        |         |
|       |             |        |         |
|       |             |        |         |
|       |             |        |         |
|       |             |        |         |

Please fill in and return both copies

Entries          \_\_\_\_\_ @ \$1.50          \_\_\_\_\_  
  \_\_\_\_\_ @ \$2.00          \_\_\_\_\_

Junior             \_\_\_\_\_ @ \$0.50          \_\_\_\_\_  
  \_\_\_\_\_ @ \$1.00          \_\_\_\_\_

Total    \_\_\_\_\_

Name              \_\_\_\_\_  
Address            \_\_\_\_\_  
Phone              \_\_\_\_\_

I Hereby enter the above, subject  
To the rules and regulations of the club.

Signature \_\_\_\_\_

Entries          \_\_\_\_\_ @ \$1.50          \_\_\_\_\_  
  \_\_\_\_\_ @ \$2.00          \_\_\_\_\_

Junior             \_\_\_\_\_ @ \$0.50          \_\_\_\_\_  
  \_\_\_\_\_ @ \$1.00          \_\_\_\_\_

Total    \_\_\_\_\_

Name              \_\_\_\_\_  
Address            \_\_\_\_\_  
Phone              \_\_\_\_\_

I Hereby enter the above, subject  
To the rules and regulations of the club.

Signature \_\_\_\_\_

Numbers for the presentation dinner \_\_\_\_\_



# Hunter Valley Wyandotte Club

## Membership Form

Based in Maitland, NSW, Australia

Membership runs from 1<sup>st</sup> July to 30<sup>th</sup> June each year.

Print off a copy of this form and post with your payment to-

The Secretary HVWC

3 First Avenue,

RUTHERFORD NSW 2320

Email: [huntervalleywyandotteclub@gmail.com](mailto:huntervalleywyandotteclub@gmail.com)

Name.....

Address.....

.....Post Code.....

Phone..... Email.....

Subscriptions are always due and payable by the 30<sup>th</sup> June each year. New members can join at any time.

Full Membership \$10.00 per annum

Junior Membership \$5.00 per annum (must be under 16 years of age)

Enclosed Amount \$.....

**Please Circle NEW or RENEWAL.** Attach a cheque or Money Order here

---

I hereby apply for Membership of the Hunter Valley Wyandotte Club and agree to abide by the rules of the club

Signed..... Date.....

Membership includes a Schedule each financial year to 30<sup>th</sup> June and discounted entry fee for birds entered in the current year's Annual Show and Auction.